

Association of Vitamin D  
Receptor Polymorphism  
(rs2228570, rs1544410,  
rs7975232, and rs731236) and  
Macrophage Migration  
Inhibitory Factor -173 G/C  
(rs755622) with active TB

*by Prof. Dr. Muh. Nasrum Massi, Ph.d*

---

**Submission date:** 01-Dec-2021 01:07AM (UTC+0700)

**Submission ID:** 1716544786

**File name:** Association\_of\_Vitamin\_D\_Receptor\_Polymorphism.pdf (1.82M)

**Word count:** 8784

**Character count:** 41675

## Association of Vitamin D Receptor Polymorphism (rs2228570, rs1544410, rs7975232, and rs731236) and Macrophage Migration Inhibitory Factor -173 G/C (rs755622) with the Susceptibility of Active Pulmonary Tuberculosis in Makassar, Indonesia

Najdah Hidayah<sup>1</sup>, Irawaty Djaharuddin<sup>2,3</sup>, Ahyar Ahmad<sup>4</sup>, Rosdiana Natzir<sup>5</sup>, Ilhamjaya Patellongi<sup>6</sup>, Agussalim Bukhari<sup>7</sup>, Irda Handayan<sup>8</sup>, Andi Tenriola<sup>9</sup>, Subair Subair<sup>1</sup>, Handayani Halik<sup>1,9</sup>, Muhammad Nasrum Massi<sup>9,10</sup>

<sup>1</sup>Postgraduate Program, Faculty of Medicine, Universitas Hasanuddin, Makassar, Indonesia; <sup>2</sup>Department of Pulmonology and Respiratory Medicine, Faculty of Medicine, Universitas Hasanuddin, Makassar, South Sulawesi, Indonesia; <sup>3</sup>Dr. Wahidin Sudirohusodo Makassar Hospital, Makassar, South Sulawesi, Indonesia; <sup>4</sup>Department of Chemistry, Faculty of Mathematics and Natural Science, Universitas Hasanuddin, Makassar, South Sulawesi, Indonesia; <sup>5</sup>Department of Biochemistry, Faculty of Medicine, Universitas Hasanuddin, Makassar, South Sulawesi, Indonesia; <sup>6</sup>Department of Physiology, Faculty of Medicine, Universitas Hasanuddin, Makassar, South Sulawesi, Indonesia; <sup>7</sup>Department of Nutrition, Faculty of Medicine, Universitas Hasanuddin, Makassar, South Sulawesi, Indonesia; <sup>8</sup>Department of Clinical Pathology, Faculty of Medicine, Universitas Hasanuddin, Makassar, South Sulawesi, Indonesia; <sup>9</sup>Hasanuddin University Medical Research Center (HUM-RC), Faculty of Medicine, Universitas Hasanuddin, Makassar, South Sulawesi, Indonesia; <sup>10</sup>Department of Clinical Microbiology, Faculty of Medicine, Universitas Hasanuddin, Makassar, South Sulawesi, Indonesia

**Edited by:** Slavica Hristomanova-Mirkovska  
**Citation:** Hidayah N, Djaharuddin I, Ahmad A, Natzir R, Patellongi I, Bukhari A, Handayan I, Tenriola A, Subair S, Halik H, Massi M. Association of Vitamin D Receptor Polymorphism (rs2228570, rs1544410, rs7975232, and rs731236) and Macrophage Migration Inhibitory Factor -173 G/C (rs755622) with the Susceptibility of Active Pulmonary Tuberculosis in Makassar, Indonesia. *Open Access Maced J Med Sci*. 2021 Oct 16; 9(A):838-848. <https://doi.org/10.3889/oamjms.2021.6859>  
**Keywords:** Vitamin D receptor; Migration inhibitory factor; Polymorphism; Active tuberculosis; Interferon-gamma release assay  
**\*Correspondence:** Muhammad Nasrum Massi, Department of Clinical Microbiology, Faculty of Medicine, Universitas Hasanuddin, Makassar, Indonesia. E-mail: nasrumm2000@yahoo.com  
**Received:** 17-Jul-2021  
**Revised:** 19-Aug-2021  
**Accepted:** 06-Oct-2021  
**Copyright:** © 2021 Najdah Hidayah, Irawaty Djaharuddin, Ahyar Ahmad, Rosdiana Natzir, Ilhamjaya Patellongi, Agussalim Bukhari, Irda Handayan, Andi Tenriola, Subair Halik, Handayani Halik, Muhammad Nasrum Massi  
**Funding:** This study was supported by the Ministry of Research and Technology, Indonesia  
**Competing Interest:** The authors have declared that no competing interest exists  
**Open Access:** This is an open-access article distributed under the terms of the Creative Commons Attribution-NonCommercial 4.0 International License (CC BY-NC 4.0)

### Abstract

**BACKGROUND:** The study of Vitamin D Receptor (VDR) and Macrophage Migration Inhibitory Factor (MIF) polymorphisms associated with active pulmonary tuberculosis (TB) (ATB) presents varying results.

**AIM:** This study aimed to investigate the association between VDR rs2228570, rs1544410, rs7975232, and rs731236 and MIF -173 G/C (rs755622) single-nucleotide polymorphism (SNP), with susceptibility of developing ATB, and positivity of interferon-gamma release assay (IGRA) results (in household contact).

**MATERIALS AND METHODS:** This study involved 83 ATB and 73 household contacts in Makassar. We checked IGRA based on ELISA in household contacts by using QuantiFERON-TB Gold Plus test, and we found that 61.64% (n = 45) of household contacts had positive IGRA. Polymorphism examination was carried out by Sanger sequencing.

**RESULTS:** VDR rs2228570 T/T and T/C-T/T were significantly associated with a higher risk of active TB. VDR rs7975232 G/G genotype was associated with an increased risk of developing active TB compared to T/T-T/G. Haplotype analysis of VDR rs2228570, rs1544410, rs7975232, and rs731236 and combination with MIF rs755622 demonstrated that TGGTG was observed to have a higher risk of TB.

**CONCLUSIONS:** The combination of VDR and MIF polymorphisms may contribute to the susceptibility of active tuberculosis disease.

### Introduction

Tuberculosis (TB) remains the world health problem, where Indonesia ranks second in the largest TB incidence, and is one of the four countries that contribute to 44% of TB cases worldwide. Most of the increase in global number of TB cases since 2013, is explained by the trends occurred in Indonesia, where the number increased from 331,703 in 2015 to 562,049 in 2019 (+69%) [1].

The main etiology, *Mycobacterium tuberculosis* (*Mtb*), could escape from the host immune system and remain dormant until the immunity is compromised. Some people with latent TB infection could develop active TB, and some remain latent [2]. The interpersonal variability of clinical manifestations is considered to be the effect of variations in human genes that control the body's defenses. The genetic vulnerability has been suggested as one of the most important explanations for individual TB risk. Several investigations have confirmed the involvement of genetic factors in the disease, including

twin studies, adoption studies, and population-based case-control association studies [3]. Genetic factors that play a role in the immune response may affect the development of pulmonary TB [4], [5], [6], [7].

Vitamin D receptors (VDRs), which are found on most immune cells, including macrophages, dendritic cells, neutrophils, and lymphocytes, have been reported to modulate both innate and adaptive immune responses [46]. VDR is a determinant of the biological activity of calcitriol (1,25(OH)<sub>2</sub>D<sub>3</sub>), which is the active form of Vitamin D [8]. Calcitriol must bind to VDR as a receptor to be able to actively work on target cells [9]. Its effects include increased synthesis of the innate immune system components, such as cathelicidin, which plays an important role in killing mycobacteria [10], [11]. Migration inhibitory factor (MIF) has also been investigated to be involved in the immune system, as an inflammatory mediator involved in the regulation of macrophage activity, chemotaxis, and secretion of pro-inflammatory cytokines [12]. Initially, MIF was described as a property of immune activity, isolated from supernatant T-lymphocytes, and found to function to inhibit the random migration of macrophages. MIF is released at the infection site, causing macrophages to localize and carry out antigen processing and phagocytosis [13]. VDR is encoded by the VDR gene which is located on chromosome 12 (12q13-14) while MIF is encoded by the MIF gene which is located on chromosome 22 (22q11.2). Variations in genes may affect the translation output, which can lead to changes in the structure, stability, or activity of the proteins produced [14], [15].

Various VDR polymorphisms have been observed in association with TB, particularly in the FokI single-nucleotide polymorphism (SNP) (rs2228570) in exon 2, BsmI (rs1544410) in intron 8, ApaI (rs7975232) in intron 8, and TaqI (rs731236) in intron 9, yet with inconsistent findings [9], [16], [17]. Besides that, the data analysis regarding the haplotype is still limited [16]. Likewise, for the MIF -173 G/C SNP (rs755622), existing studies linking it to the risk of TB have shown varying results [18], [19], [20]. Thus, more studies are needed to confirm the association of these polymorphisms to TB risk. The study of genetic association with TB is expected to facilitate the development of vaccinomic and immunomic therapies for TB.

## Subjects and Methods

### Recruitment of research participants and sampling

This study involved 156 samples, consisting of 83 new active pulmonary TB patients and 73 household contacts. Active pulmonary TB patients were recruited from the Makassar Center for Community Lung Health (BBKPM) and were diagnosed comprehensively through

anamnesis, physical examination, chest radiograph, and positive smear sputum which were further confirmed by culture using BD BACTEC MGIT 960 (BD, Sparks, MD, USA). The age of recruited patients was 15 years or more, with no previous use of anti-TB drugs, and HIV-positive TB patients were excluded. The household contacts recruited were people living in the same house for at least 6 months with targeted TB patients, have no clinical symptoms of TB, history of TB a history of previous anti-TB drug consumption. All research subjects have signed the consent form to be involved in the study.

This research has obtained ethical approval from the Ethics Commission of the Faculty of Medicine, Hasanuddin University, Makassar, Indonesia.

### Interferon-gamma (IFN- $\gamma$ ) release assay (IGRA) examination on household contact samples

IGRA examination was conducted on household contact samples using QuantiFERON-TB Gold Plus (QFT-Plus, Hilden, Germany). This assay was an *in vitro* diagnostic test using a peptide cocktail protein ESAT-6 and CFP-10 to stimulate blood cells. Detection of IFN- $\gamma$  with ELISA (enzyme-linked immunosorbent assay) was used to identify the antigen response associated with infection of *Mtb* [21], [22]. Blood samples from household contacts which were collected with four tubes of QFT-Plus were then further treated according to the kit instruction. Furthermore, an ELISA examination was carried out using the QFT-Plus ELISA test kit according to the manual instruction and readings were carried out using the ELISA reader and subsequently analyzed using QuantiFERON-TB Gold Plus Test analysis software (available from <https://www.quantiferon.com>). The results were positive, negative, and indeterminate. The indeterminate results were excluded, thus the household contact group was then divided into two groups according to the IGRA results, IGRA<sup>(+)</sup> and IGRA<sup>(-)</sup> of household contacts.

### DNA extraction

Genomic DNA was isolated from blood using Geneaid DNA Extraction Kit (Geneaid, Taiwan). Briefly, as much as 200  $\mu$ l of plasma and buffy coat was mixed with 20  $\mu$ l of Proteinase K and then incubated for 5 min at 60°C. Then, the mixture was added with GSB buffer and re-incubated at 60°C for 5 min. After that, 96% ethanol was added for DNA binding and then the mixture was transferred to a spin column and centrifuged. Afterward, washing was conducted using W1 buffer and wash buffer. Eventually, the elution buffer was dropped right in the middle of the spin column matrix, left for at least 3 min, and then centrifuged to obtain the DNA extract of the sample.

### DNA amplification and sequencing to determine SNP

VDR and MIF polymorphism was detected by PCR followed by sequencing. PCR was performed using KAPA Taq ReadyMix (Roche, USA) to amplify the targeted sequence using specific primers, to detect rs2228570, rs1544410, rs7975232, rs731236, and rs755622 SNPs (Table 1). PCR product was visualized on 2% agarose gel and sent to 1<sup>st</sup> BAsE (Apical Scientific Sdn. Bhd.) to be sequenced.

### Statistical analysis

This study uses the IBM SPSS Statistics for Windows, version 25.0 (IBM Corp. Armonk, NY, USA) application to perform statistical analysis. Categorical data were analyzed using the Chi-square to determine the significance between groups. While numerical data with normal distribution were analyzed using the t-test and one-way ANOVA for comparisons in two and three groups, respectively. A p-value under 0.05 was considered as a statistically significant value. The deviation of polymorphisms from the Hardy-Weinberg equilibrium was examined using  $\chi^2$  model, by comparing the observed and expected genotype frequencies in the two groups. Individual genotype analysis was performed using age- and sex-corrected logistic regression model for genotypes that were significantly detected using the SNPStats online software (<https://www.snppstats.net>) [25]. Haplotype analysis was also carried out by using SNPStats online software and p-value below 0.05 was considered statistically significant. Linkage disequilibrium (LD) was analyzed using the SNPStats online software with D' and  $r^2$  as the measurement values.

## Results

### Sample characterization

A total of 83 samples of pulmonary TB patients and 73 household contacts participated in this study. All samples were homogeneous by age ( $p = 0.333$ ). Based on the IGRA examination with the QuantiFERON-Gold Plus TB kit, it was found that 45 household contacts (61.64%) had positive IGRA results and the rest (38.35%) had negative IGRA results. The characterization of the participants is described in Table 2. Gender has a significant relationship with the incidence of TB and the positivity of IGRA results ( $p = 0.001$ ). There was a significant difference in body mass index (BMI) between the three groups in this study ( $p < 0.0001$ ). In addition, more positive IGRA samples (62.2%) were found in household contacts' spouses (husband or wife), compared to the other household contacts such as parents, children, and siblings. Moreover, about 55.4% of the pulmonary TB patient group were smokers, and this result was statistically different when compared to the other group ( $p < 0.0001$ ).

### Single SNP analysis

The genotype frequencies across all SNPs were consistent with Hardy-Weinberg equilibrium. The sequencing chromatogram results are represented in Figures 1 and 2 on Supplementary Materials for VDR and MIF SNPs, respectively. Table 3 shows the distribution of VDR genotype of each SNP in ATB patients as the case group and household contacts as the control group. The frequencies of VDR rs2228570 T/T were more in ATB patients than in control, and this genotype was significantly associated with a higher risk of ATB.

**Table 1: Primers and PCR conditions used in this study**

SNP	Primer	Target	PCR conditions						Primer Reference
			P	C	D	A	E	F	
VDR rs2228570	F 5'-AGC TGG CCG TGG CAC TGA CTC TGC TCT-3' R 5'-ATG GAA CCT TGC TTC TTC TCC CTC-3'	267 bp	94°C 5 m	35 x	94°C 30 s	58°C 30 s	72°C 20 s	72°C 7 m	[10]
VDR rs1544410	F 5'-AGT GTG CAG GCG ATT CGTA G-3' R 5'-ATA GGC AGA ACC ATC TCTC AG-3'	191 bp	94°C 5 m	35x	94°C 30 s	55°C 30 s	72°C 20 s	72°C 5 m	[23]
VDR rs7975232 and VDR rs731236	F 5'-CAG AGC ATG GAC AGG GAG CAA-3' R 5'-ACT TCG AGC ACA AGG GGC GTT A-3'	500 bp	94°C 5 m	35x	94°C 30 s	50°C 30 s	72°C 1 m	72°C 5 m	HUM-RC Laboratory
MIF -173 G/C rs755622	F 5'-CTG ACT TCT CCG ACA CCA CT-3' R 5'-AAG GGT AAG GGG CCA TCT TC-3'	352 bp	95°C 5 m	40x	95°C 30 s	60°C 30 s	72°C 1 m	72°C 5 m	[24]

P: Predenaturation; C: Cycles; D: Denaturation; A: Annealing; F: Final extension; M: minutes; s: Seconds

**Table 2: Characterization of participants in this study**

Variables	Active pulmonary tuberculosis n = 83	IGRA <sup>+</sup> household contacts n = 45	IGRA <sup>-</sup> household contacts n = 28	p-value
Sex				
• Male	44 (53%)	14 (31.1%)	5 (17.9%)	0.001 <sup>a</sup>
• Female	39 (47%)	31 (68.9%)	23 (82.1%)	
Age (years)	41 ± 14.17 (44)	39.6 ± 13.81 (40)	36.57 ± 11.63 (37.5)	0.333 <sup>b</sup>
BMI (kg/m <sup>2</sup> )	19.03 ± 3.42 (18.75)	22.95 ± 4.5 (22.49)	26.44 ± 5.66 (25.55)	<0.0001 <sup>b</sup>
Relationship to index cases (household contacts only)				
• Parent/son/daughter		11 (24.4%)	9 (32.1%)	0.025 <sup>a</sup>
• Spouse		28 (62.2%)	9 (32.1%)	
• Others		6 (13.3%)	10 (35.7%)	
History of smoking habits				
• Yes	46 (55.4%)	11 (24.4%)	4 (14.3%)	<0.0001 <sup>a</sup>
• No	37 (44.6%)	34 (75.6%)	24 (85.7%)	

<sup>a</sup>Chi-square test. <sup>b</sup>One-way ANOVA test

**Table 3: Distribution of genotype and their association in pulmonary tuberculosis compared to control (household contacts)**

SNP	Genotype	Control (household contacts) n (%)	Active pulmonary tuberculosis patients n (%)	OR (95% CI)	p-value
rs2228570 (VDR FokI)	Dominant				
	C/C	29 (39.7)	20 (24.1)	1.00	0.04
	T/C	38 (52)	46 (55.4)	1.84 (0.85–3.99)	
	T/T	6 (8.2)	17 (20.5)	4.16* (1.29–13.42)	
	Recessive				
	C/C	29 (39.7)	20 (24.1)	1.00	0.041
	T/C-T/T	44 (60.3)	63 (75.9)	2.16* (1.02–4.55)	
	Codominant				
	C/C-T/C	67 (91.8)	66 (79.5)	1.00	0.045
	T/T	6 (8.2)	17 (20.5)	2.82 (0.98–8.12)	
rs1544410 (VDR BsmI)	Dominant				
	G/G	51 (69.9)	63 (75.9)	1.00	0.12
	G/A	22 (30.1)	18 (21.7)	0.59 (0.27–1.30)	
	A/A	0 (0)	2 (2.4)	NA (0.00–NA)	
	Recessive				
	G/G	51 (69.9)	63 (75.9)	1.00	0.29
	G/A-A/A	22 (30.1)	20 (24.1)	0.66 (0.30–1.43)	
	Codominant				
	G/G-G/A	73 (100)	81 (97.6)	1.00	0.12
	A/A	0 (0)	2 (2.4)	NA (0.00–NA)	
rs7975232 (VDR ApaI)	Dominant				
	G/G	21 (28.8)	38 (45.8)	1.00	0.13
	T/G	38 (52)	31 (37.4)	0.49 (0.22–1.05)	
	T/T	14 (19.2)	14 (16.9)	0.46 (0.17–1.26)	
	Recessive				
	G/G	21 (28.8)	38 (45.8)	1.00	0.044
	G/T-T/T	52 (71.2)	45 (54.2)	0.48* (0.23–0.99)	
	Codominant				
	G/G-G/T	59 (80.8)	69 (83.1)	1.00	0.41
	T/T	14 (19.2)	14 (16.9)	0.69 (0.28–1.70)	
rs731236 (VDR TaqI)	Dominant				
	T/T	61 (83.6)	72 (86.8)	1.00	0.47
	T/C	11 (15.1)	11 (13.2)	0.91 (0.35–2.41)	
	C/C	1 (1.4)	0 (0)	0.00 (0.00–NA)	
	Recessive				
	T/T	61 (83.6)	72 (86.8)	1.00	0.71
	T/C-C/C	12 (16.4)	11 (13.2)	0.83 (0.32–2.16)	
	Codominant				
	T/T-T/C	72 (98.6)	83 (100)	1.00	0.22
	C/C	1 (1.4)	0 (0)	0.00 (0.00–NA)	
rs755622 (MIF -173 G/C)	Dominant				
	G/G	38 (52)	50 (60.2)	1.00	0.84
	G/C	33 (45.2)	31 (37.4)	1.05 (0.47–2.39)	
	C/C	2 (2.7)	2 (2.4)	0.05 (0.07–4.49)	
	Recessive				
	G/G	38 (52)	50 (60.2)	1.00	0.99
	G/C-C/C	35 (48)	33 (39.8)	1.00 (0.45–2.20)	
	Codominant				
	G/G-G/C	71 (97.3)	81 (97.6)	1.00	0.56
	C/C	2 (2.7)	2 (2.4)	0.54 (0.07–4.29)	

OR and p value are adjusted by age, sex, and history of smoking. NA: not applicable. Asterisk means significant OR.

The dominant model showed that T/C-T/T was also significantly associated with increased risk of ATB and C/C was associated with reduced risk of ATB. Furthermore, a significant association was observed in T/T genotype when ATB group was compared to IGRA<sup>(+)</sup> household contact (Table 4). VDR rs1544410 showed no association between genotypic differences and increased risk, however, specifically, observed genotype G/A was associated with a reduced risk of ATB compared to G/G in men (data not shown). Using the codominant model, no relationship was discovered between the VDR rs7975232 and ATB. An association was only observed using dominant model, where G/G genotype was associated with about two-fold increased risk of contracted TB compared to T/T-T/G. A significant association was also found when ATB was compared to IGRA<sup>(+)</sup> household contact group, where T/T was associated with a lower risk of ATB. This association is further clarified by using the dominant model where G/T-T/T is also associated with reduced risk of ATB, and this means that G/G is associated with an increased risk of TB. While polymorphisms VDR rs731236 and MIF -173 G/C rs755622 were not associated with an increased risk of TB in this study. We also examined

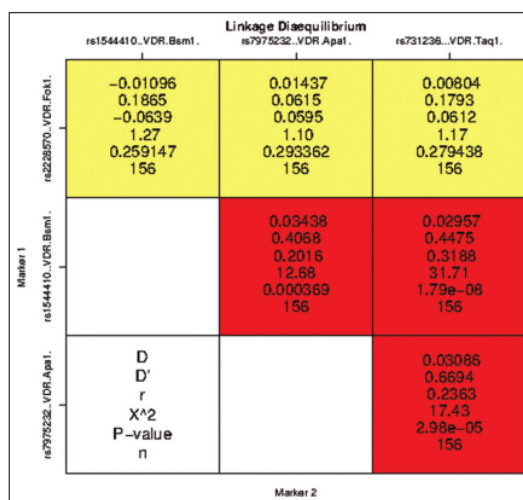


Figure 1: The graph demonstrates the linkage disequilibrium (LD) on VDR rs1544410, rs7975232, and rs731236. The square shows the association of genes listed on the horizontal curve and those listed on the vertical curve. The statistical parameters of LD were listed on each square. A darker color indicates that the genes are in strong LD. A strong LD relationship was also shown with a significant ( $p < 0.05$ )

**Table 4: Distribution of genotype and their association in pulmonary tuberculosis compared to IGRA<sup>(+)</sup> household contacts**

SNP	Genotype	IGRA <sup>(+)</sup> household contacts n (%)	Active pulmonary tuberculosis patients n (%)	OR (95% CI)	p-value
rs2228570 ( <i>VDR FokI</i> )	Codominant				
	C/C	17 (37.8)	20 (24.1)	1.00	0.097
	T/C	24 (53.3)	46 (55.4)	1.74 (0.73–4.13)	
	T/T	4 (8.9)	17 (20.5)	3.94* (1.05–14.82)	
	Dominant				
	C/C	17 (37.8)	20 (24.1)	1.00	0.091
	T/C-T/T	28 (62.2)	63 (75.9)	2.05 (0.89–4.73)	
	Recessive				
	C/C-T/C	41 (91.1)	66 (79.5)	1.00	0.079
	T/T	4 (8.9)	17 (20.5)	2.75 (0.83–9.13)	
rs1544410 ( <i>VDR BsmI</i> )	Codominant				
	G/A	32 (71.1)	63 (75.9)	1.00	0.28
	A/A	13 (28.9)	18 (21.7)	0.69 (0.24–1.66)	
	0 (0)	2 (2.4)	NA (0.00–NA)		
	Dominant				
	G/G	32 (71.1)	63 (75.9)	1.00	0.55
	G/A-A/A	13 (28.9)	20 (24.1)	0.76 (0.32–1.83)	
	Recessive				
	G/G-G/A	45 (100)	81 (97.6)	1.00	0.17
	A/A	0 (0)	2 (2.4)	NA (0.00–NA)	
rs7975232 ( <i>VDR ApaI</i> )	Codominant				
	G/T	11 (24.4)	38 (45.8)	1.00	0.081
	T/T	23 (51.1)	31 (37.4)	0.45 (0.18–1.12)	
	11 (24.4)	14 (16.9)	0.32* (0.11–0.97)		
	Dominant				
	G/G	11 (24.4)	38 (45.8)	1.00	0.032
	G/T-T/T	34 (75.6)	45 (54.2)	0.41* (0.18–0.94)	
	Recessive				
	G/G-G/T	34 (75.6)	69 (83.1)	1.00	0.16
	T/T	11 (24.4)	14 (16.9)	0.50 (0.19–1.31)	
rs731236 ( <i>VDR TagI</i> )	Codominant				
	T/T	36 (80)	72 (86.8)	1.00	0.37
	T/C	8 (17.8)	11 (13.2)	0.80 (0.28–2.27)	
	C/C	1 (2.2)	0 (0)	0.00 (0.00–NA)	
	Dominant				
	T/T	36 (80)	72 (86.8)	1.00	0.52
	T/C-C/C	9 (20)	11 (13.2)	0.71 (0.26–1.98)	
	Recessive				
	T/T-T/C	44 (97.8)	83 (100)	1.00	0.18
	T/C	1 (2.2)	0 (0)	0.00 (0.00–NA)	
rs755622 ( <i>MIF -173 G/C</i> )	Codominant				
	G/G	24 (53.3)	50 (60.2)	1.00	0.9
	G/C	19 (42.2)	31 (37.4)	0.83 (0.37–1.84)	
	C/C	2 (4.4)	2 (2.4)	0.87 (0.11–6.83)	
	Dominant				
	G/G	24 (53.3)	50 (60.2)	1.00	0.64
	G/C-C/C	21 (46.7)	33 (39.8)	0.83 (0.38–1.81)	
	Recessive				
	G/G-G/C	43 (95.6)	81 (97.6)	1.00	0.95
	C/C	2 (4.4)	2 (2.4)	0.93 (0.12–7.17)	

OR and P value are adjusted by age, sex, and history of smoking. NA: Not applicable. Asterisk means significant OR

**Table 5: Haplotype analysis of *VDR* gene (rs2228570, rs1544410, rs7975232, and rs731236)**

Haplotype	Control (household contact)	Active tuberculosis patients	OR (95% CI)	p-value
rs2228570-rs1544410-rs7975232				
C G G	0.3156	0.3118	1.00	---
C G G	0.125	0.2834	1.84 (0.79–4.28)	0.16
C G T	0.2525	0.1208	0.43 (0.16–1.16)	0.097
T G T	0.1562	0.1515	1.73 (0.57–5.19)	0.33
C A G	0.046	0.0493	0.80 (0.21–3.04)	0.75
C A T	0.0433	0.0361	0.83 (0.09–7.75)	0.87
rs2228570-rs1544410-rs731236				
C G T	0.4549	0.5369	1.00	---
T G T	0.3673	0.2734	2.66* (1.18–5.98)	0.02
C A T	0.0903	0.0716	1.11 (0.36–3.46)	0.85
C A C	0.0261	0.023	0.57 (0.04–9.15)	0.7
C G C	0.024	0.022	1.79 (0.19–16.99)	0.61
C A C	0.0141	0.0271	1.44 (0.11–18.00)	0.78
T G C	0.0127	0.017	0.61 (0.04–10.08)	0.25
T A T	0.0105	0.0291	0.68 (0.01–43.98)	0.86
rs1544410-rs7975232-rs731236				
C G T	0.401	0.5971	1.00	---
A T T	0.4099	0.236	0.51* (0.27–0.94)	0.034
A T T	0	0.0532	0.55 (0.12–2.61)	0.45
A G T	0.1	0.0475	0.81 (0.17–3.73)	0.78
A T C	0.0273	0.0319	0.69 (0.11–4.19)	0.69
C T C	0.0149	0.0344	7.07 (0.01–6619.79)	0.58
rs2228570-rs1544410-rs7975232-rs731236				
C G G T	0.3073	0.3171	1.00	---
T G G T	0.0968	0.2802	1.96 (0.83–4.61)	0.13
C G T T	0.2064	0.0951	0.30* (0.10–0.93)	0.039
T G T T	0.2045	0.142	2.03 (0.61–6.71)	0.25
C A G T	0.0959	0.0473	1.28 (0.27–6.07)	0.76
T G T C	0.0137	0.0121	0.50 (0.02–11.63)	0.67

OR and p value are adjusted by age, sex, and history of smoking. Asterisk means significant OR.

the association between IGRA positivity in household contacts based on the QFT-Plus results. Of all the SNPs analyzed with various models, there were no

relationship between these polymorphisms and an increased risk of positive QFT-Plus (Supplementary Table 1 and Supplementary Figures 1 and 2).

21 **Table 6: Haplotype analysis of VDR gene (rs2228570, rs1544410, rs7975232, and rs731236) and combination with MIF -173 (rs755622)**

rs2228570	rs1544410	rs7975232	rs731236	rs755622	Control (Household contact)	Active tuberculosis patients	OR (95% CI)	p-value
C	G	G	T	G	0.2397	0.2151	1.00	---
T	G	G	T	G	0.046	0.2604	11.01*(1.91–63.50)	0.0082
C	G	T	T	G	0.1351	0.1043	0.78 (0.21–2.87)	0.7
T	G	T	T	G	0.1535	0.0788	4.18 (0.77–22.68)	0.099
C	G	G	T	C	0.0679	0.0958	3.77 (0.78–18.24)	0.1
T	G	T	T	C	0.0521	0.0521	3.24 (0.44–24.03)	0.25
T	G	G	T	C	0.0502	0.026	0.43 (0.05–3.84)	0.45
C	A	G	T	G	0.0957	0.0335	2.22 (0.19–26.55)	0.53
T	G	T	C	G	0.0132	0.0228	1.10 (0.12–9.94)	0.93

Asterisk means significant OR frequency threshold for rare haplotypes: 0.01.

### Multiple SNP analysis

VDR rs1544410, rs7975232, and rs731236 were in LD (Figure 1). The analysis compiled of VDR gene rs2228570, rs1544410, rs7975232, and rs731236 is described in Table 5. Haplotype of TG-T on rs2228570-rs1544410-rs731236 was found to be associated with a higher risk of ATB, and -GTT rs1544410-rs7975232-rs731236 was observed to be associated with a lower risk of ATB. Haplotype analysis using four SNPs of VDR found that CGTT was associated with a significantly reduced risk of ATB. The analysis of association between haplotype of VDR gene (rs2228570, rs1544410, rs7975232, and rs731236) in combination with MIF -173 (rs755622) and TB is presented in Table 6. Using the logistic regression model, the TGGTG was observed to have a higher risk of TB (OR: 11.01 [1.91–63.50], p = 0.0082).

## Discussion

Our result on VDR rs2228570 (VDR *FokI*) signified a consistent result to prior study in Beijing, Iran, as well as New Delhi, and Shimla (India), which uncovered that recessive homozygous (TT) genotype was associated with the increased risk of TB pulmonary [11], [26], [27], [28]. The change in C to T is known to create alternative codons (ACG-ATG), making the protein is three amino acids longer, namely methionine-glutamine-alanine. It is suspected that this longer protein variant has lower activity than the short VDR protein variant (generated by the C allele) [29].

As for the VDR polymorphism rs7975232 (VDR *Apal*), our analysis showed significant results only for the dominant comparison model, where the G/G genotype had a two-fold risk of having TB than the T/G-T/T genotypes. Our finding was similar to research in West Africa [30] but in contrast to research in Romania which showed that aa (GG) might serve as a protective allele on TB development [31]. The other study from Beijing (China), Taiwan, and Venezuela did not find an association between VDR polymorphism rs7975232 and TB [11], [32], [33]. VDR rs7975232 is an intronic variant considered to affect VDR translation through changes of the splices site [34].

28 There was no association between VDR rs1544410 (VDR *BsmI*) polymorphism and TB in this study. VDR rs1544410 can be in disequilibrium with other functional polymorphisms that regulate VDR gene expression [35]. Considerable research results which investigated the links between the VDR rs1544410 and risk of TB showed inconsistent results, for example, studies in Kolkata (India), Zahedan (Iran), and Beijing (China) did not find an association between the VDR rs1544410 and risk of TB [11], [26], [36]. Contrarily, other studies in Taiwan, Shimla (India), and even in Medan (Indonesia), a different province from our study site, revealed different results [28], [33], [37]. Using the meta-analysis method, some researchers were able to conclude various publications. Some of them concluded that there was no relationship between VDR rs1544410 and the risk of TB, while some concluded that the association was only found in the Asian population [9], [16], [38].

35 MIF gene promoter polymorphisms have been associated with overproduction of MIF and found to provide an increased risk of susceptibility to chronic inflammatory disease [39], [40]. Several studies have reported that the C allele of MIF -173 G/C (rs755622) was linked to TB in Colombia, South Africa, and the East China population [19], [15], [41], [42]. However, this study did not find an association between the genotype of MIF -173 G/C with the risk of pulmonary TB, and this result was similar to a study in the Brazilian population [18]. The diversity in different ethnicities or populations and diverse clinical features may contribute to the genotype distribution of VDR and MIF polymorphisms and different results explaining this correlation to TB. The single SNP alone may not explain much of the genetic association to TB susceptibility, hence several SNPs may be considered for analysis. Haplotype association can be an alternative in this regard and maybe a more useful mapping method than SNP analysis alone.

21 Based on haplotype analysis of the VDR gene (rs2228570, rs1544410, rs7975232, and rs731236) in combination with MIF -173 G/C (rs755622), the TGGTG was observed to have a higher risk of TB (OR: 11.01 [1.91–63.50], p = 0.0082). We can see that the other combinations of TG---, i.e., TGTTG, TGTC, and TGTGC have OR value >1, are also likely to be associated with TB risk. However, the value of 95% CI range exceeds the value 1, indicating a nonsignificant value. Thus, we can assume that TG--- (the combination

of allele T on rs2228570 and G on rs1544410) may be a potential predictor to develop TB disease, but it should be in series with --GTG on rs7975232, rs731236, and rs755622, respectively.

A study in Iran showed that f-B-T (TGT) and f-b-t (TAC) on rs2228570-rs1544410-rs731236 may contribute to an increased risk of TB. This result indicated that G and A allele on rs1544410 and T and C on rs731236 could be a potential risk allele in ATB development if they were together with T allele on rs2228570. Our study showed a similar result on TGT, but not on TAC. The association of the TGT genotype decreased when compiled with rs7975232, whereas TGGT (G on rs7975232) only showed a marginal association [78]. An increased risk of TB and TGTT (T on rs7975232) did not show a significant association with TB. The lack of association with TGTT may be explained by the combination rs1544410-rs7975232-rs731236 analysis, which showed that haplotype -GTT significantly reduces the risk of TB. However, when TGGT was combined with the G allele at MIF -173 G/C rs755622, the risk of susceptibility increased. This suggests that more SNPs involved in the analysis may further clarify the association of genetic variants to susceptibility to TB.

IGRA indicated the presence of specific antibodies in the body of a patient whose immune system has been exposed to TB, and the levels of IFN-specific *Mtb* produced have reached the threshold of positive IGRA results. The principle of IGRA is that when individual T-cells infected with TB infection restimulated with the *Mtb* antigen, they release IFN- $\gamma$  cytokines [43]. A positive result can indicate the presence of *Mtb* bacteria, both in active and dormant status. IGRA is often used to screen as well as to diagnose latent TB, although IGRA is not the only method used to identify a person with latent TB. Confirmation of latent TB requires clinical examination as well as a chest radiograph that is clear of TB spots. There is another method that can be used to detect TB latency other than the IGRA, called TST. Yet, IGRA is considered to have higher sensitivity and specificity values [44]. The results of this study indicated that VDR polymorphisms may be associated with a person's susceptibility to developing active TB, but not with IGRA positivity. Thus, we might consider the possibility that the VDR genotype does not affect either person infected with TB or not (because the VDR genotype is not associated with an increased risk of positive IGRA). Nevertheless, this VDR polymorphism may predispose a person to develop active TB disease. Findings showed that the T allele on VDR rs2228570 was associated with an increased risk of active TB, but it was not associated with the positivity of IGRA. However, when he is later infected with TB, the risk may be more likely to develop into active TB. This presumption can be supported by the finding of a significant association which was observed in T/T genotype when ATB group was compared to IGRA<sup>(+)</sup> household contact. Surely, this argument requires further research, whether there

are certain polymorphisms in household contacts who are susceptible to developing latent TB to active TB, by following their disease course.

The authors are aware of the limitations of this study. The small number of samples may cause certain genotypes to be unidentified in the population. Furthermore, IGRA was performed only once, without a follow-up upon the IGRA results. Hence, the possible transition from negative to positive IGRA results may occur and influence the results. In addition, this study did not identify the genotype or species of *Mycobacterium*, which may need to be investigated, as a factor in influencing human genetic susceptibility to certain genotypes or strains of *Mycobacterium*. Previous studies have shown genetic diversity of *Mtb* isolates in a similar city where our study was conducted [45]. However, the sequencing method was applied in this study, considerably more accurate and feasible than the widely used RFLP method [46] of previous studies. The results of this study further strengthen the previous research that there is an association between the combination of VDR with MIF and TB. It is expected that these findings would provide more insight into the link between VDR and a person's susceptibility to active TB. Since Indonesia is a country with the second-highest number of TB cases, it may be difficult for its population to avoid exposure to TB. However, being aware of the higher risk in particular population, certain efforts can be increased to prevent the development of the disease.

## Conclusion

VDR rs2228570 T/T was significantly associated with a higher risk of active TB. In addition, the dominant model showed that T/C-T/T was also significantly associated with an increase in risk of active TB. VDR rs7975232 G/G genotype was associated with an increased risk of developing active TB compared to T/T-T/G. Haplotype analysis of VDR rs2228570, rs1544410, rs7975232, and rs731236 and combination with MIF -173 (rs755622) demonstrated that TGGTG was observed to have a higher risk of TB. In summary, the combination of VDR and MIF variants may contribute to the susceptibility to active tuberculosis. Further research is needed to include more samples and more combinations of other polymorphism sites so that the role of genetics in the susceptibility or resistance of TB can be better understood.

## Acknowledgment

The authors are grateful to the Ministry of Research and Technology, Indonesia, for sponsoring

this research through a grant with the agreement number 1517/UN4.22/PT.01.03/2020 listed in the decree number 7/AMD/EI/KP.PTNBH/2020 through Integrated Master-Doctor<sup>44</sup> program for excellent undergraduate students (Program Magister Menuju Doktor untuk Sarjana Unggul/PMDSU). The authors also give their appreciation to the Makassar Center for Community Lung Health and the staff of the HUM-RC Laboratory of the Hasanuddin University Medical Faculty. The authors also thank to all participants who were involved in this research.

## References

- World Health Organization. Global Tuberculosis Report 2020. Geneva: World Health Organization, 2020. Available from: <https://www.apps.who.int/iris/rest/bitstreams/1312164/retrieve> [Last accessed on 2021 Jul 17].
- World Health Organization. Guidelines on the Management of Latent Tuberculosis Infection; 2015. Available from: [https://apps.who.int/iris/bitstream/10665/136471/1/9789241548908\\_eng.pdf](https://apps.who.int/iris/bitstream/10665/136471/1/9789241548908_eng.pdf) [Last accessed on 2021 Jul 16].
- Moller M, Hoal EG. Current findings, challenges and novel approaches in human genetic susceptibility to tuberculosis. *Tuberculosis*. 2010;90(2):71-83. <https://doi.org/10.1016/j.tube.2010.02.002>  
PMid:20206579
- Aravindan PP. Host genetics and tuberculosis: Theory of genetic polymorphism and tuberculosis. *Lung India*. 2019;36(3):244-52. [https://doi.org/10.4103/lungindia.lungindia\\_146\\_15](https://doi.org/10.4103/lungindia.lungindia_146_15)  
PMid:31031349
- van Tong H, Velavan TP, Thye T, Meyer CG. Human genetic factors in tuberculosis: An update. *Trop Med Int Health*. 2017;22(9):1063-1071. <https://doi.org/10.1111/tmi.12923>  
PMid:28685916
- Harishankar M, Selvaraj P, Bethunaickan R. Influence of genetic polymorphism towards pulmonary tuberculosis susceptibility. *Front Med*. 2018;5:213. <https://doi.org/10.3389/fmed.2018.00213>  
PMid:30167433
- Leandro AC, Rocha MA, Cardoso CS, Bonecini-Almeida MG. Genetic polymorphisms in Vitamin D receptor, Vitamin D-binding protein, toll-like receptor 2, nitric oxide synthase 2, and interferon- $\gamma$  genes and its association with susceptibility to tuberculosis. *Braz J Med Biol Res*. 2009;42(4):312-22. <https://doi.org/10.1590/s0100-879x2009000400002>  
PMid:19330258
- Pike JW, Meyer MB. The Vitamin D receptor: New paradigms for the regulation of gene expression by 1,25-dihydroxyvitamin D<sub>3</sub>. *Rheum Dis Clin*. 2012;38(1):13-27. <https://dx.doi.org/10.1016%2Fj.ecl.2010.02.007>  
PMid:20511050
- Gao L, Tao Y, Zhang L, Jin Q. Vitamin D receptor genetic polymorphisms and tuberculosis: Updated systematic review and meta-analysis. *Int J Tuberc Lung Dis* 2010;14(1):15-23. PMid:20003690
- Medapati RV, Suvvari S, Godi S, Gangiseti P. NRAMP1 and VDR gene polymorphisms in susceptibility to pulmonary tuberculosis among Andhra Pradesh population in India: A case-control study. *BMC Pulm Med*. 2017;17(1):89. <https://doi.org/10.1186/s12890-017-0431-5>  
PMid:28583097
- Zhang Y, Zhu H, Yang X, Guo S, Liang Q, Lu Y, et al. Serum Vitamin D level and Vitamin D receptor genotypes may be associated with tuberculosis clinical characteristics A case-control study. *Medicine (Baltimore)*. 2018;97(30):e11732. <https://doi.org/10.1097/MD.00000000000011732>  
PMid:30045341
- Lue H, Kleemann R, Calandra T, Roger T, Bemhagen J. Macrophage migration inhibitory factor (MIF): Mechanisms of action and role in disease. *Microbes Infect*. 2002;4(4):449-60. [https://doi.org/10.1016/s1286-4579\(02\)01560-5](https://doi.org/10.1016/s1286-4579(02)01560-5)  
PMid:11932196
- Kok T, Wasiel AA, Cool RH, Melgert BN, Poelarends GJ, Dekker FJ. Small-molecule inhibitors of macrophage migration inhibitory factor (MIF) as an emerging class of therapeutics for immune disorders. *Drug Discov Today*. 2018;23(11):1910-8. <https://doi.org/10.1016/j.drudis.2018.06.017>  
PMid:29936245
- Johnson AD, Zhang Y, Papp AC, Pinsonneault JK, Lim JE, Saffen D, et al. Polymorphisms affecting gene transcription and mRNA processing in pharmacogenetic candidate genes: Detection through allelic expression imbalance in human target tissues. *Pharm Genom*. 2008;18(9):781-91. <https://doi.org/10.1097/fpc.0b013e3283050107>  
PMid:18698231
- Robert F, Pelletier J. Exploring the impact of single-nucleotide polymorphisms on translation. *Front Genet*. 2018;9:1-11. <https://doi.org/10.3389/fgene.2018.00507>  
PMid:30425729
- Lee YH, Song GG. Vitamin D receptor gene FokI, TaqI, BsmI, and Apal polymorphisms and susceptibility to pulmonary tuberculosis: A meta-analysis. *Genet Mol Res*. 2015;14(3):9118-29. <https://doi.org/10.4238/2015.august.7.21>  
PMid:26345844
- Xu X, Shen M. Associations between Vitamin D receptor genetic variants and tuberculosis: A meta-analysis. *Innate Immun*. 2019;25(5):305-13. <https://doi.org/10.1177/1753425919842643>  
PMid:30987490
- Milano M, Moraes MO, Rodenbusch R, Carvalho CX, Delcroix M, Gehlen M, Mousquer G, et al. Macrophage migration inhibitory factor -173 G>C single nucleotide polymorphism and its association with active pulmonary tuberculosis. *PLoS One*. 2020;15(6):e0234565. <https://doi.org/10.1371/journal.pone.0234565>  
PMid:32525926
- Go LM, Sa E, Lo MA. Macrophage migration inhibitory factor gene influences the risk of developing tuberculosis in northwestern Colombian population. *Tissue Antigens*. 2007;70(1):28-33. <https://doi.org/10.1111/j.1399-0039.2007.00843.x>  
PMid:17559578
- Li Y, Yuan T, Lu W, Chen M, Cheng X, Deng S. Association of tuberculosis and polymorphisms in the promoter region of macrophage migration inhibitory factor (MIF) in a Southwestern China Han population. *Cytokine*. 2012;60(1):64-7. <https://doi.org/10.1016/j.cyto.2012.06.010>  
PMid:22742858
- Barcellini L, Borroni E, Brown J, Brunetti E, Campisi D, Castellotti PF, et al. First evaluation of QuantiFERON-TB gold plus performance in contact screening. *Eur Respir J*. 2016;48(5):1411-9. <https://doi.org/10.1183/13993003.00510-2016>  
PMid:27390280
- Qiagen. QuantiFERON® TB Gold Plus (QFT® -Plus) ELISA Package Insert 2; 2016. Available from: <http://www.quantiferon.com/wp-content/uploads/2017/04/>

- English\_QFTPlus\_ELISA\_R04\_022016.pdf [Last accessed on 2021 May 20].
23. Marozik P, Mosse I, Alekna V, Rudenko E, Tamulaitienė M, Ramanau H, *et al.* Association between polymorphisms of VDR, COL1A1, and LCT genes and bone mineral density in belarusian women with severe postmenopausal osteoporosis. *Medicina (Kaunas, Lithuania)*. 2013;49(4):177-84. <https://doi.org/10.3390/medicina49040028>  
PMid:23985982
  24. Wang J, Zhan X, Liu C, Zhang D, Meng L, Deng L. MIF, TGF- $\beta$ 1, IFN- $\gamma$  and NRAMP1 gene polymorphisms in relation to the clinicopathological profile of spinal tuberculosis in Chinese Han population. *Int J Clin Exp Pathol*. 2016;9(4):4438-47. <http://www.ijcep.com/files/ijcep0021163.pdf>
  25. Solé X, Guinó E, Valls J, Iniesta R, Moreno V. SNPStats: A web tool for the analysis of association studies. *Bioinformatics*. 2006;22(15):1928-29. <https://doi.org/10.1093/bioinformatics/btl268>  
PMid:16720584
  26. Salimi S, Farajian-masshadi F, Alavi-Naini R, Talebian G, Narooie-Nejad M. Association between Vitamin D receptor polymorphisms and haplotypes with pulmonary tuberculosis. *Biomed Reports* 2015;3(2):189-94. <https://doi.org/10.3892/br.2014.402>  
PMid:26075071
  27. Panda S, Tiwari A, Luthra K, Shama SK, Singh A. Association of Fok1 VDR polymorphism with Vitamin D and its associated molecules in pulmonary tuberculosis patients and their household contacts. *Sci Rep*. 2019;9(1):1-10. <https://doi.org/10.1038/s41598-019-51803-8>  
PMid:31649297
  28. Singla N, Gupta D, Birbian N, Singh J. Association of VDR gene polymorphism and haplotype with tuberculosis susceptibility, treatment outcome, bacillary load and extrapulmonary site. *J Mol Biol Tech*. 2015;1(1):101.
  29. Jurutka PW, Remus LS, Whitfield GK, Thompson PD, Hsieh JC, Zitzer H, *et al.* The polymorphic N terminus in human Vitamin D receptor isoforms influences transcriptional activity by modulating interaction with transcription factor IIB. *Mol Endocrinol*. 2000;14(3):401-20. <https://doi.org/10.1210/mend.14.3.0435>  
PMid:10707958
  30. Olesen R, Wejse C, Bisseye C, Sodemann M, Aaby P, Rabna P, *et al.* DC-SIGN (CD209), pentraxin 3 and Vitamin D receptor gene variants associate with pulmonary tuberculosis risk in West Africans. *Genes Immun*. 2007;8(6):456-67. <https://doi.org/10.1038/sj.gene.6364410>  
PMid:17611589
  31. Alexandra SG, Georgiana DC, Nicoleta C, Daniela PM, Traian S, Veronica S. Apa I and taq I polymorphisms of CDR (Vitamin D receptor) gene in association with susceptibility to tuberculosis in the Romanian population. *Rom Biotechnol Lett*. 2013;18(1):7956-62.
  32. Fernández-Mestre M, Villasmil Á, Takiff H, Alcalá ZF. NRAMP1 and VDR gene polymorphisms in susceptibility to tuberculosis in venezuelan population. *Dis Markers* 2015;2015:860628. <https://doi.org/10.1155/2015/860628>  
PMid:26578819
  33. Lee SW, Chuang TY, Huang HH, Liu CW, Kao YH, Wu LS. VDR and VDBP genes polymorphisms associated with susceptibility to tuberculosis in a Han Taiwanese population. *J Microbiol Immunol Infect*. 2016;49(5):783-7. <https://doi.org/10.1016/j.jmii.2015.12.008>  
PMid:26869016
  34. Hussain T, Naushad SM, Ahmed A, Alamery S, Mohammed AA, Abdelkader MO, *et al.* Association of Vitamin D receptor TaqI and ApaI genetic polymorphisms with nephrolithiasis and end stage renal disease: A meta-analysis. *BMC Med Genet*. 2019;20(1):193. <https://doi.org/10.1186/s12881-019-0932-6>  
PMid:31822280
  35. Morrison NA, Qi JC, Tokita A, Kelly PJ, Crofts L, Nguyen TV, *et al.* Prediction of bone density from Vitamin D receptor alleles. *Nature*. 1994;367(6460):284-7. <https://doi.org/10.1038/367284a0>  
PMid:8161378
  36. Singh A, Gaughan JP, Kashyap VK. SLC11A1 and VDR gene variants and susceptibility to tuberculosis and disease progression in East India. *Int J Tuberc Lung Dis*. 2011;15(11):1468-75. <https://doi.org/10.5588/ijtld.11.0089>  
PMid:22008758
  37. Sinaga BY, Amin M, Siregar Y, Sarumpaet SM. Correlation between Vitamin D receptor gene FOKI and BSM1 polymorphisms and the susceptibility to pulmonary tuberculosis in an Indonesian Batak-ethnic population. *Acta Med Indones* 2014;46(4):275-82. <http://www.inaactamedica.org/archives/2014/25633543.pdf>  
PMid:25633543
  38. Areeshi MY, Mandal RK, Dar SA, Alshahrani AM, Ahmad A, Jawed A, *et al.* A reappraised meta-analysis of the genetic association between Vitamin D receptor Bsm I (rs1544410) polymorphism and pulmonary tuberculosis risk. *Biosci Rep*. 2017;37(3):BSR20170247. <https://doi.org/10.1042/bsr20170247>  
PMid:28533426
  39. De Benedetti F, Meazza C, Vivarelli M, Rossi F, Pistorio A, Lamb R, *et al.* Functional and prognostic relevance of the -173 polymorphism of the macrophage migration inhibitory factor gene in systemic-onset juvenile idiopathic arthritis. *Arthritis Rheum*. 2003;48(5):1398-407. <https://doi.org/10.1002/art.10882>  
PMid:12746913
  40. Fei B, Lv HX, Yang JM, Ye ZY. Association of MIF-173 gene polymorphism with inflammatory bowel disease in Chinese Han population. *Cytokine*. 2008;41(1):44-7. <https://doi.org/10.1016/j.cyt.2007.10.010>  
PMid:18054247
  41. Reid D, Shenoi S, Singh R, Wang M, Patel V, *et al.* Low expression macrophage migration inhibitory factor (MIF) alleles and tuberculosis in HIV infected South Africans. *Cytokine X*. 2019;1(1):100004. <https://doi.org/10.1016/j.cyt.2019.100004>  
PMid:33604547
  42. Kuai SG, Ou QF, You DH, Shang ZB, Wang J, Liu J, *et al.* Functional polymorphisms in the gene encoding macrophage migration inhibitory factor (MIF) are associated with active pulmonary tuberculosis. *Infect Dis (Auckl)*. 2016;48(3):222-8. <https://doi.org/10.3109/23744235.2015.1107188>  
PMid 26542751
  43. Pai M, Zwerling A, Menzies D. Systematic review: T-cell-based assays for the diagnosis of latent tuberculosis infection: An update. *Ann Intern Med*. 2008;149(3):177-84. <https://doi.org/10.7326/0003-4819-149-3-200808050-00241>  
PMid:18593687
  44. Trajman A, Steffen RE, Menzies D. Interferon-gamma release assays versus tuberculin skin testing for the diagnosis of latent tuberculosis infection: An overview of the evidence. *Pulm Med*. 2013;2013:601737. <https://doi.org/10.1155/2013/601737>  
PMid:23476763
  45. Sasmono RT, Massi MN, Setianingsih TY, Wahyuni S, Anita, Halik H, *et al.* Heterogeneity of *Mycobacterium tuberculosis* strains in Makassar, Indonesia. *Int J Tuberc Lung Dis* 2012;16(11):1441-8. <https://doi.org/10.5588/ijtld.12.0055>  
PMid:23044445
  46. Davis AH, Wang J, Tsang TC, Harris DT. Direct sequencing is more accurate and feasible in detecting single nucleotide polymorphisms than RFLP: Using human vascular endothelial growth factor gene as a model. *Biol Res Nurs*. 2007;9:170-8. <https://doi.org/10.1177/1099800407308083>  
PMid:17909169

## Supplementary Materials

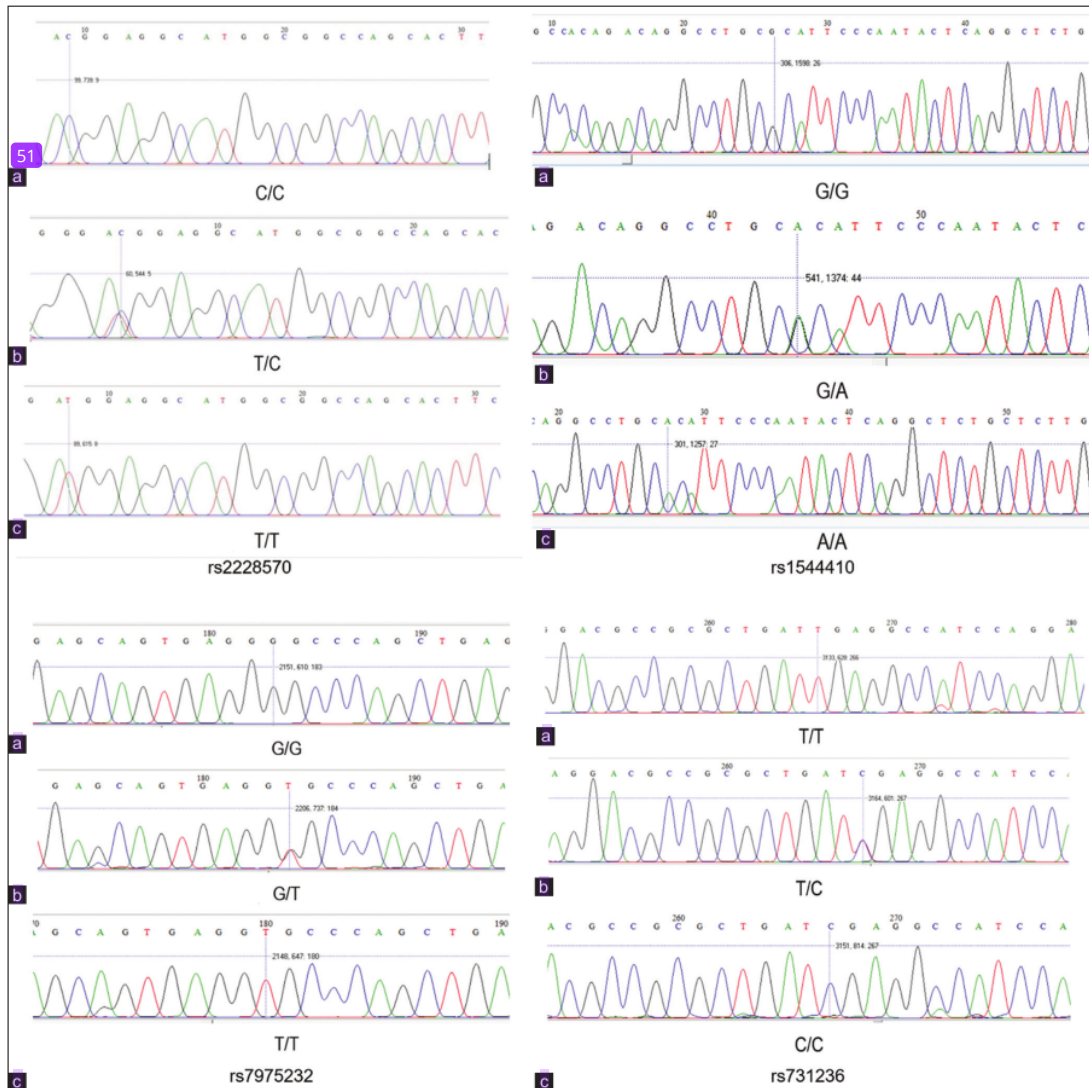


Figure 1: (a-c) Sequencing result of VDR gene shows rs2228570, rs1544410, rs7975232, and rs731236 SNP

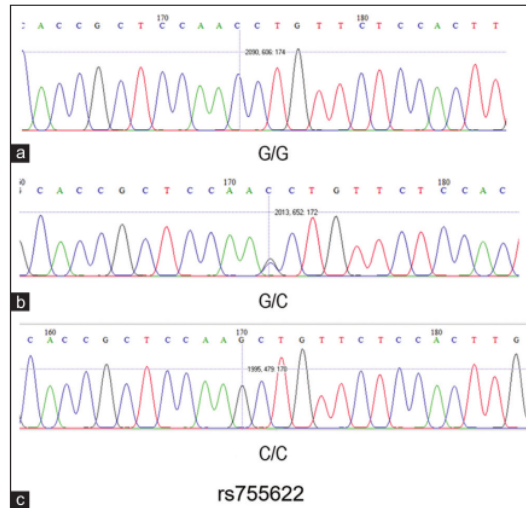


Figure 2: (a-c) Sequencing result of MIF gene shows rs755622 SNP (minus strand)

Table 1: Distribution of genotype and their association in IGRA<sup>(-)</sup> and IGRA<sup>(+)</sup> household contacts

SNP	Genotype	IGRA <sup>(-)</sup> household contacts n (%)	IGRA <sup>(+)</sup> household contacts n (%)	OR (95 CI)	p-value
rs2228570 (VDR FokI)	Codominant				
	G/C	12 (42.9)	17 (37.8)	1.00	0.94
	T/C	14 (50)	24 (53.3)	1.19 (0.42–3.36)	
	T/T	2 (7.1)	4 (8.9)	1.23 (0.18–8.37)	
	Dominant				
	C/C	12 (42.9)	17 (37.8)	1.00	0.73
	T/C-T/T	16 (57.1)	28 (62.2)	1.19 (0.44–3.25)	
	Recessive				
	C/C-T/C	26 (92.9)	41 (91.1)	1.00	0.89
	T/T	2 (7.1)	4 (8.9)	1.13 (0.18–7.16)	
rs1544410 (VDR BsmI)	G/G	19 (67.9)	32 (71.1)	1.00	0.6
	G/A	9 (32.1)	13 (28.9)	0.75 (0.26–2.18)	
	Codominant				
rs7975232 (VDR ApaI)	G/G	3 (10.7)	11 (24.4)	1.00	0.28
	T/G	15 (53.6)	23 (51.1)	0.46 (0.10–1.99)	
	T/T	10 (35.7)	11 (24.4)	0.29 (0.06–1.40)	
	Dominant				
	G/G	10 (35.7)	11 (24.4)	1.00	0.24
	G/T-T/T	18 (64.3)	34 (75.6)	1.93 (0.65–5.75)	
	Recessive				
G/G-G/T	25 (89.3)	34 (75.6)	1.00	0.16	
T/T	3 (10.7)	11 (24.4)	2.60 (0.64–10.58)		
rs731236 (VDR TaqI)	Codominant				
	T/T	25 (89.3)	36 (80)	1.00	0.55
	T/C	3 (10.7)	8 (17.8)	1.74 (0.41–7.47)	
	C/C	0 (0)	1 (2.2)	NA (0.00–NA)	
	Dominant				
	T/T	25 (89.3)	36 (80)	1.00	0.38
	T/C-C/C	3 (10.7)	9 (20)	1.88 (0.44–7.98)	
	Recessive				
T/T-T/C	28 (100)	44 (97.8)	24 (0.00–NA)	0.44	
rs755622 (MIF -173 G/C)	Codominant				
	G/G	14 (50)	24 (53.3)	1.00	0.4
	G/C	14 (50)	19 (42.2)	0.94 (0.35–2.54)	
	C/C	0 (0)	2 (4.4)	NA (0–NA)	
	Dominant				
	G/G	14 (50)	24 (53.3)	1.00	0.94
	G/C-C/C	14 (50)	21 (46.7)	1.04 (0.39–2.78)	
	Recessive				
	G/G-G/C	28 (100)	43 (95.6)	1.00	0.17
	C/C	0 (0)	2 (4.4)	NA (0–NA)	

OR and p value are adjusted by age, sex, and history of smoking. NA: Not applicable. rs1544410 is only available in the G/G and G/A genotype comparison models.

# Association of Vitamin D Receptor Polymorphism (rs2228570, rs1544410, rs7975232, and rs731236) and Macrophage Migration Inhibitory Factor -173 G/C (rs755622) with active TB

## ORIGINALITY REPORT

**25%**  
SIMILARITY INDEX

**18%**  
INTERNET SOURCES

**22%**  
PUBLICATIONS

**9%**  
STUDENT PAPERS

## PRIMARY SOURCES

- 1** Irda Handayani, Muhammad Nasrum Massi, Yanti Leman, Rosdiana Natzir et al. "Composite Bacterial Infection Index and Serum Amyloid A Protein in Pulmonary Tuberculosis Patients and their Household Contacts in Makassar", Open Access Macedonian Journal of Medical Sciences, 2021  
Publication **1%**
- 2** Submitted to Higher Education Commission Pakistan  
Student Paper **1%**
- 3** Haerian, B.S.. "Lack of association of ABCB1 and PXR polymorphisms with response to treatment in epilepsy", Seizure: European Journal of Epilepsy, 201106  
Publication **1%**
- 4** Submitted to Howard University  
Student Paper **1%**
- 5** [journals.plos.org](https://journals.plos.org)

Internet Source

1 %

6

[www.hindawi.com](http://www.hindawi.com)

Internet Source

1 %

7

[hepatmon.com](http://hepatmon.com)

Internet Source

1 %

8

[repository.maranatha.edu](http://repository.maranatha.edu)

Internet Source

1 %

9

Submitted to Universitas Katolik Indonesia

Atma Jaya

Student Paper

1 %

10

Andi Tenriola, Najdah Hidayah, Subair Subair, Muhammad Nasrum Massi et al. "The Significance of Differences in Melanocortin 3 Levels and their Relationship with Pulmonary Tuberculosis and Body Mass Index", Open Access Macedonian Journal of Medical Sciences, 2021

Publication

1 %

11

[www.ncbi.nlm.nih.gov](http://www.ncbi.nlm.nih.gov)

Internet Source

1 %

12

[spandidos-publications.com](http://spandidos-publications.com)

Internet Source

1 %

13

[eldorado.tu-dortmund.de](http://eldorado.tu-dortmund.de)

Internet Source

<1 %

14

Submitted to Universitas Hasanuddin

Student Paper

&lt;1 %

15

Mohammed Y. Areeshi, Raju K. Mandal, Sajad A. Dar, Arshad Jawed et al. "MIF -173 G > C (rs755622) Gene Polymorphism Modulates Tuberculosis Risk: Evidence from a Meta-analysis and Trial Sequential Analysis", Scientific Reports, 2017

Publication

&lt;1 %

16

Shou-Gang Kuai, Qin-Fang Ou, De-Hong You, Zhong-Bo Shang, Jun Wang, Jun Liu, Xi-Ke Zhou, Hao Pei, Li-Hua Huang. "Functional polymorphisms in the gene encoding macrophage migration inhibitory factor (MIF) are associated with active pulmonary tuberculosis", Infectious Diseases, 2015

Publication

&lt;1 %

17

[onlinelibrary.wiley.com](http://onlinelibrary.wiley.com)

Internet Source

&lt;1 %

18

[fedorani.ni.ac.rs](http://fedorani.ni.ac.rs)

Internet Source

&lt;1 %

19

Bárbara Cancela Díez, Cristina Pérez-Ramírez, María del Mar Maldonado-Montoro, María Isabel Carrasco-Campos et al. "Association between polymorphisms in the vitamin D receptor and susceptibility to multiple

&lt;1 %

sclerosis", Pharmacogenetics and Genomics,  
2020

Publication

20

Handayani Irda, Djaharuddin Irawaty, Natzir Rosdiana, Arief Mansyur et al. "Contribution of NRAMP1 gene expression and protein level in pulmonary and latent TB infection in Indonesia", Journal of Applied Pharmaceutical Science, 2021

Publication

<1 %

21

Heine, G., N. Hoefler, A. Franke, U. Nöthling, R.R. Schumann, L. Hamann, and M. Worm. "Association of vitamin D receptor gene polymorphisms with severe atopic dermatitis in adults : SNPs in atopic dermatitis", British Journal of Dermatology, 2013.

Publication

<1 %

22

[pt.scribd.com](http://pt.scribd.com)  
Internet Source

<1 %

23

[www.e-crt.org](http://www.e-crt.org)  
Internet Source

<1 %

24

[www.iadb.org](http://www.iadb.org)  
Internet Source

<1 %

25

[www.researchsquare.com](http://www.researchsquare.com)  
Internet Source

<1 %

26

[www.nature.com](http://www.nature.com)  
Internet Source

<1 %

27

[www.oncotarget.com](http://www.oncotarget.com)

Internet Source

&lt;1 %

28

[portlandpress.com](http://portlandpress.com)

Internet Source

&lt;1 %

29

Marra Francesco La, Giuseppe Stinco, Cinzia Buligan, Giovanni Chiriaco, Diego Serraino, Loreto Carla Di, Sabina Cauci.

"Immunohistochemical evaluation of vitamin D receptor (VDR) expression in cutaneous melanoma tissues and four VDR gene polymorphisms", *Cancer Biology & Medicine*, 2017

Publication

&lt;1 %

30

Xin Zhang, Yu-Jing Fang, Xiao-Li Feng, Alinuer Abulimiti, Chu-Yi Huang, Hong Luo, Cai-Xia Zhang. "Interactions Between Vitamin D and Calcium Intake, Vitamin D Receptor Genetic Polymorphisms, and Colorectal Cancer Risk", *Digestive Diseases and Sciences*, 2020

Publication

&lt;1 %

31

[repositorio-aberto.up.pt](http://repositorio-aberto.up.pt)

Internet Source

&lt;1 %

32

[link.springer.com](http://link.springer.com)

Internet Source

&lt;1 %

33

[www.krcp-ksn.org](http://www.krcp-ksn.org)

Internet Source

&lt;1 %

34

[www.tandfonline.com](http://www.tandfonline.com)

Internet Source

&lt;1 %

35

Murat Akyildiz. "Macrophage migration inhibitory factor expression and MIF gene -173 G/C polymorphism in nonalcoholic fatty liver disease :", *European Journal of Gastroenterology & Hepatology*, 02/2010

Publication

&lt;1 %

36

Tjie Kok, Anna A. Wasiel, Robbert H. Cool, Barbro N. Melgert, Gerrit J. Poelarends, Frank J. Dekker. "Small-molecule inhibitors of macrophage migration inhibitory factor (MIF) as an emerging class of therapeutics for immune disorders", *Drug Discovery Today*, 2018

Publication

&lt;1 %

37

Yu, W., M. Ge, J. Shi, X. Li, J. Zhang, M. Wang, Y. Shao, and Y. Zheng. "Role of vitamin D receptor gene polymorphisms in aplastic anemia: a case-control study from China", *International Journal of Laboratory Hematology*, 2016.

Publication

&lt;1 %

38

[www.frontiersin.org](http://www.frontiersin.org)

Internet Source

&lt;1 %

39

Ayşe Feyda Nursal, Serbulent Yigit, Ercan Tural, Goknur Kalkan, Mehmet Kemal Tumer,

&lt;1 %

Akin Tekcan. "Macrophage Migration Inhibitory Factor -173GC Variant Might Increase the Risk of Behçet's Disease", Medical Principles and Practice, 2018

Publication

40

Submitted to Sriwijaya University

Student Paper

<1 %

41

[mts.intechopen.com](https://mts.intechopen.com)

Internet Source

<1 %

42

I D Daud, Muhammad Junaid, M Tuwo. "Endophytic seed with and liquid compost: control of pest stem borer of corn, and increase yield resilient in marginal land? ", IOP Conference Series: Earth and Environmental Science, 2020

Publication

<1 %

43

Ruiping Liu, Nanwei Xu, Xinxiang Wang, Li Shen, Gongyin Zhao, Hui Zhang, Weimin Fan. "Influence of MIF, CD40, and CD226 polymorphisms on risk of rheumatoid arthritis", Molecular Biology Reports, 2012

Publication

<1 %

44

Submitted to School of Business and Management ITB

Student Paper

<1 %

45

Upendra Yadav, Pradeep Kumar, Vandana Rai. "FokI polymorphism of the vitamin D receptor

<1 %

(VDR) gene and susceptibility to tuberculosis: evidence through a meta-analysis", Research Square, 2021

Publication

46

[business.thepostandmail.com](https://business.thepostandmail.com)

Internet Source

<1 %

47

Nuzhat Shaheen Khan, Mohammad Sultan Allai, Bushra Nissar, Niyaz Ahmad Naykoo et al. "Genetic association of Tumour necrosis factor alpha, Interleukin-18 and Interleukin 1 beta with the risk of coronary artery disease: A case-control study outcome from Kashmir", Journal of Applied Biomedicine, 2018

Publication

<1 %

48

[ebin.pub](https://ebin.pub)

Internet Source

<1 %

49

[mafiadoc.com](https://mafiadoc.com)

Internet Source

<1 %

50

[nardus.mpn.gov.rs](https://nardus.mpn.gov.rs)

Internet Source

<1 %

51

[www.lix.polytechnique.fr](https://www.lix.polytechnique.fr)

Internet Source

<1 %

52

Hussam Zawam, Noha E. Ibrahim, Rasha Salama, Mai Samir et al. "Impact of Genetic Polymorphism of Myeloid Differentiation Primary Response Gene 88, Enhancer of Zeste

<1 %

Homolog 2, and B-cell Lymphoma 2 like 11 in Patients with Diffuse Large B Cell Lymphoma Treated with Rituximab, Cyclophosphamide, Doxorubicin, Vincristin", Open Access Macedonian Journal of Medical Sciences, 2021

Publication

53

[clinicaltrials.gov](https://clinicaltrials.gov)

Internet Source

<1 %

54

Hong-Miao Li, Ye Li, Gen-You Zhang, Si-Jiu Shi, Tian-Ping Zhang. "Association of vitamin D receptor and CYP2R1 mRNA expression with pulmonary tuberculosis", Archives of Medical Science, 2020

Publication

<1 %

55

John Arcaroli. "GENETIC POLYMORPHISMS AND SEPSIS", Shock, 10/2005

Publication

<1 %

56

Langdahl. "Polymorphisms in the vitamin D receptor gene and bone mass, bone turnover and osteoporotic fractures", European Journal of Clinical Investigation, 7/2000

Publication

<1 %

57

Marina Vivarelli. "Association of the macrophage migration inhibitory factor -173\*C allele with childhood nephrotic syndrome", Pediatric Nephrology, 05/2008

Publication

<1 %

59

Asadollah Mohammadi, Hashem Khanbabaie, Rasoul Nasiri-Kalmarzi, Farzad Khademi, Mohammad Jafari, Nader Tajik. "Vitamin D receptor Apal (rs7975232), Bsml (rs1544410), Fok1 (rs2228570), and TaqI (rs731236) gene polymorphisms and susceptibility to pulmonary tuberculosis in an Iranian population: A systematic review and meta-analysis", Journal of Microbiology, Immunology and Infection, 2019

Publication

&lt;1 %

60

C.A. Silva, D.C.R.O. Fernandes, A.C.O. Braga, G.C. Cavalcante et al. "Investigation of genetic susceptibility to Mycobacterium tuberculosis (VDR and IL10 genes) in a population with a high level of substructure in the Brazilian Amazon region", International Journal of Infectious Diseases, 2020

Publication

&lt;1 %

61

Hajrawati, H Nuraini, I I Arief, D Sajuthi. " The capability of Cemba ( [DC.]) benth leaf extract in inhibiting ", IOP Conference Series: Earth and Environmental Science, 2020

Publication

&lt;1 %

62

Hiromasa Yoshie. "The role of genetic polymorphisms in periodontitis",

&lt;1 %

63

Jun Wang, Bin Sheng, XiaoPeng Li, JianMin Sun, Lin Shi, WenTao Wei, GuoWei Wang, XueJun Cao. "Migration inhibitory factor in spinal tuberculosis: -173G/C polymorphisms, and transcript and protein levels in a northern province of China", Medicine, 2020

Publication

<1 %

64

White, M J, A Tacconelli, J S Chen, C Wejse, P C Hill, V F Gomes, D R Velez-Edwards, L J Østergaard, T Hu, J H Moore, G Novelli, W K Scott, S M Williams, and G Sirugo. "Epiregulin (EREG) and human V-ATPase (TCIRG1): genetic variation, ethnicity and pulmonary tuberculosis susceptibility in Guinea-Bissau and The Gambia", Genes and Immunity, 2014.

Publication

<1 %

65

[apps.who.int](https://apps.who.int)

Internet Source

<1 %

66

[journals.lww.com](https://journals.lww.com)

Internet Source

<1 %

67

[ped-rheum.biomedcentral.com](https://ped-rheum.biomedcentral.com)

Internet Source

<1 %

68

[repository.ubn.ru.nl](https://repository.ubn.ru.nl)

Internet Source

<1 %

69

Internet Source

&lt;1 %

70

[www.karger.com](http://www.karger.com)

Internet Source

&lt;1 %

71

"Poster Session Clinical", European Journal of Heart Failure, 2013.

Publication

&lt;1 %

72

Alexandrina L. Dumitrescu. "Modifying Disease Genes in Relation to Periodontitis", Genetic Variants in Periodontal Health and Disease, 2009

Publication

&lt;1 %

73

Ayça Dilara Yılmaz, Duygu Yazicioglu, Ayşegül Mine Tüzüner Öncül, Erkan Yılmaz, Gülden Ereş. "Vitamin D receptor gene polymorphisms (Apa1 and Taq1) in temporomandibular joint internal derangement/osteoarthritis in a group of Turkish patients", Molecular Biology Reports, 2018

Publication

&lt;1 %

74

Elia Noemi Gallegos Morales, Johannes Knierer, Anja Schablon, Albert Nienhaus, Jan Felix Kersten. "Prevalence of latent tuberculosis infection among foreign students in Lübeck, Germany tested with QuantiFERON-TB Gold In-Tube and

&lt;1 %

QuantiFERON-TB Gold Plus", Journal of Occupational Medicine and Toxicology, 2017

Publication

75

Noelia Marquez Pete, Cristina Perez Ramirez, Maria del Mar Maldonado Montoro, Fernando Martinez Martinez et al. "Association of vitamin D receptor gene polymorphisms with rheumatoid arthritis", Archives of Medical Science, 2021

Publication

<1 %

76

Noha A. Hassuna, Mohamed El Feky, Aliae A. R. Mohamed Hussein, Manal A. Mahmoud et al. "Interleukin-18 and interferon- $\gamma$  single nucleotide polymorphisms in Egyptian patients with tuberculosis", PLOS ONE, 2021

Publication

<1 %

77

R Olesen. "DC-SIGN (CD209), pentraxin 3 and vitamin D receptor gene variants associate with pulmonary tuberculosis risk in West Africans", Genes and Immunity, 09/2007

Publication

<1 %

78

[bmcpulmed.biomedcentral.com](http://bmcpulmed.biomedcentral.com)

Internet Source

<1 %

79

[epdf.pub](http://epdf.pub)

Internet Source

<1 %

80

[helda.helsinki.fi](http://helda.helsinki.fi)

Internet Source

<1 %

81

[idpjournal.biomedcentral.com](http://idpjournal.biomedcentral.com)

Internet Source

&lt;1 %

82

[sites.kowsarpub.com](http://sites.kowsarpub.com)

Internet Source

&lt;1 %

83

[www.e-jer.org](http://www.e-jer.org)

Internet Source

&lt;1 %

84

Amani M. T. Gusti, Safaa Y. Qusti, Eida M. Alshammari, Eman A. Toraih, Manal S. Fawzy. "Antioxidants-Related Superoxide Dismutase (SOD), Catalase (CAT), Glutathione Peroxidase (GPX), Glutathione-S-Transferase (GST), and Nitric Oxide Synthase (NOS) Gene Variants Analysis in an Obese Population: A Preliminary Case-Control Study", *Antioxidants*, 2021

Publication

&lt;1 %

85

Lehmann, L.E.. "A single nucleotide polymorphism of macrophage migration inhibitory factor is related to inflammatory response in coronary bypass surgery using cardiopulmonary bypass", *European Journal of Cardio-Thoracic Surgery*, 200607

Publication

&lt;1 %

86

Susan P Moffett. "Association of the *VDR* Translation Start Site Polymorphism and Fracture Risk in Older Women", *Journal of Bone and Mineral Research*, 05/2007

&lt;1 %

87 Young Gyu Eun, Young Chan Lee, Su Kang Kim, Joo-Ho Chung, Kee Hwan Kwon, Il Seok Park. "Single nucleotide polymorphisms of the Fas gene are associated with papillary thyroid cancer", *Auris Nasus Larynx*, 2015  
Publication

---

88 "Genetic Polymorphism and cancer susceptibility", Springer Science and Business Media LLC, 2021  
Publication

---

89 Amita Gupta, Grace Montepiedra, Akshay Gupte, Bret Zeldow et al. "Low Vitamin-D Levels Combined with PKP3-SIGIRR-TMEM16J Host Variants Is Associated with Tuberculosis and Death in HIV-Infected and -Exposed Infants", *PLOS ONE*, 2016  
Publication

---

90 Fang Yin, Jing Liu, Ming-Xiu Fan, Xiao-Li Zhou, Xiao-Ling Zhang. "Association between the vitamin D receptor gene polymorphisms and diabetic nephropathy risk: A meta-analysis", *Nephrology*, 2018  
Publication

---

91 Farrukh Jamal, Tabish Qidwai, Sangram Singh. "Chapter 1 Biomedical Importance of Host Genetic Factors in Infectious Diseases", IntechOpen, 2012

92

H.J. Sánchez-Pérez, Anaximandro Gómez-Velasco, G. Leal, A. Bencomo-Alarm, N. Romero-Sandoval, M. Martín-Mateo. "Chapter 1 Tuberculosis (TB) and Human Rights in Chiapas, Mexico", IntechOpen, 2015

<1 %

Publication

---

Exclude quotes On

Exclude matches < 5 words

Exclude bibliography On